

A photograph of a dumbbell and weight plates on a concrete floor. The floor has several footprints, suggesting a path or journey. The dumbbell is positioned diagonally in the upper right, and the weight plates are in the lower right. The overall tone is gritty and industrial.

# Ethical Decision Making and How to Build Moral Muscle

Jason Lesandrini, PhD, FACHE, HEC-C, LPEC

Assistant Vice President of Ethics, Advance Care Planning  
and Spiritual Health, and Language Access Service

WellStar Health System

# Disclosure of Relevant Financial Relationships

I have no relevant financial relationships with commercial interests to disclose



Scratch on the door!  
Scratch on the door!



PEE ON THE RUG!  
PEE ON THE RUG!

# EXPECTATIONS





- Identify the components of Ethical Leadership
- Practice Ethical Decision Making and Hone an individual's moral muscle.
- Implement ethical leadership practices within the perioperative setting.



Ethical decision-making and  
the importance of  
developing our ethical  
muscles



# MORAL AWARENESS

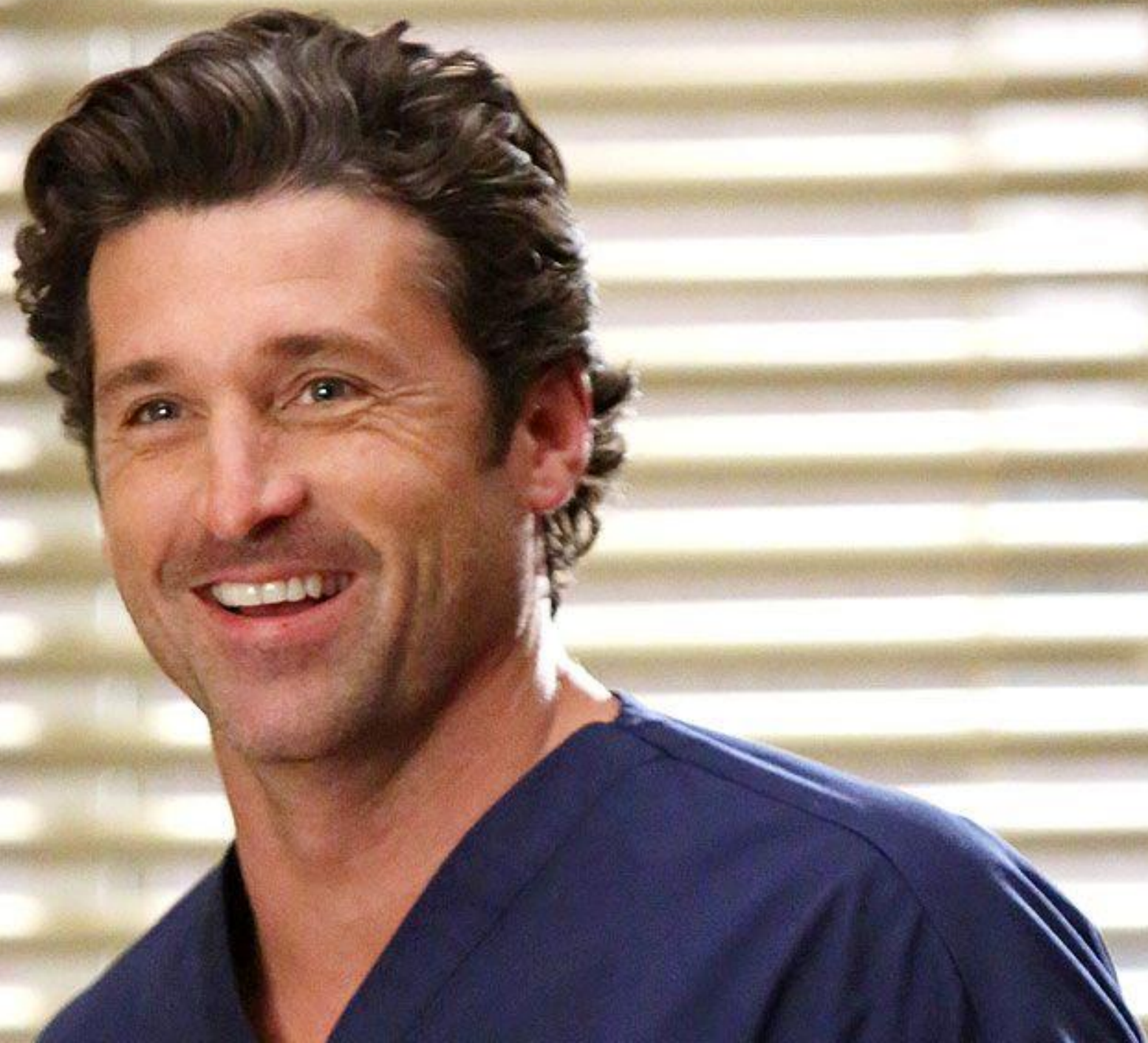
(c) 2010 Daniel J. Simons











# The distinction between Ethics, Compliance, Legal Requirements

Name \_\_\_\_\_

Signature \_\_\_\_\_



A person wearing a dark blue suit jacket, a light blue dress shirt, and a red tie is shown from the chest up. Their right hand is raised, with the index and middle fingers pointing upwards. The word "ETHICS" is written in large, white, sans-serif capital letters across the center of the image, partially overlapping the person's hand and suit. The background is a solid light blue color.

ETHICS



# Buying a House

- A physician in the local area is considering on purchasing a house from one of his patients.
- The house is in a prime location and the physician really wants to move there, so his kids can have access to the great schools.



**COMPLIANCE**







A row of white wooden figures, resembling a line of people, with one red figure in the center. The figures are arranged in a slightly curved line, and the red figure is positioned in the middle, standing out from the others. The background is a light, neutral color.

# Moral Persons, Moral Managers and Ethical Leaders



**What Traits Do Ethical Leaders Share?**



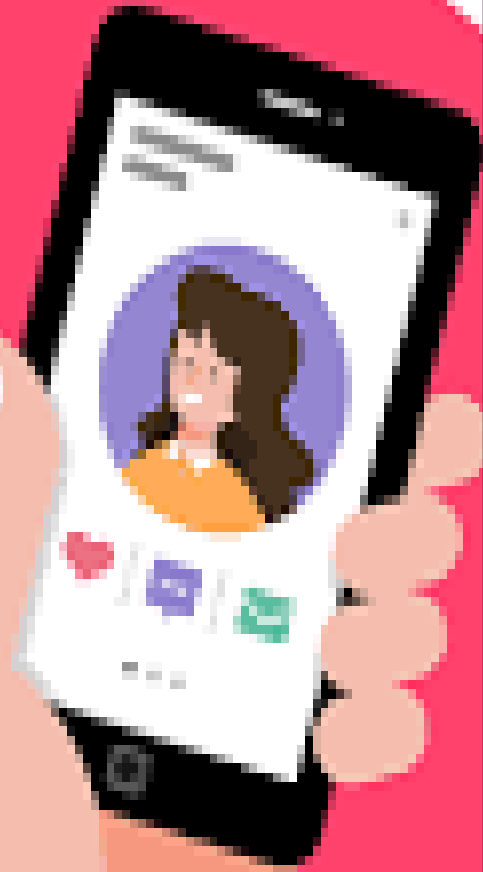
## **Log in to Poll Everywhere**

To present live activities, please log in to your Poll Everywhere account in a separate window.

[Launch log-in window](#)



# ETHICAL LEADERS



Moral

Person

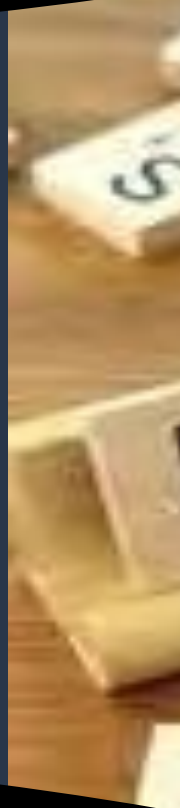




y



FAIRNESS

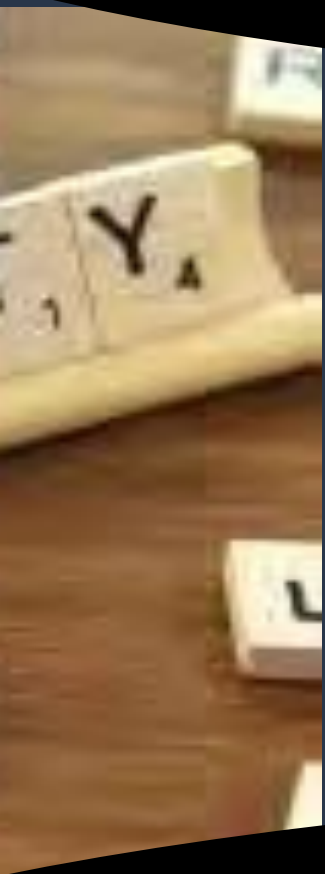


Honesty













Good Person ≠ Moral Manager

# Moral Manager



- Demonstrates Ethics as a Priority
- Communicate Clear Expectations Around Ethical Practices
- Use the Right incentives to Drive Behavior
- Practice Ethical Decision Making
- Supports the Ethics Program





A woman with dark hair pulled back, wearing a dark blue tank top and red boxing gloves, is shown in a boxing stance. She has a focused and determined expression. The background is dark and out of focus, suggesting a gym or training area.

Let's Practice

Practicing Ethical  
Decision-Making

The background features a light blue gradient with two large, dynamic ink splashes. On the left, a vibrant blue splash spreads outwards. On the right, a bright pink splash spreads outwards. The two splashes meet in the center, creating a purple hue where they overlap. The overall effect is fluid and artistic.

# The Impact of Ethical Leadership

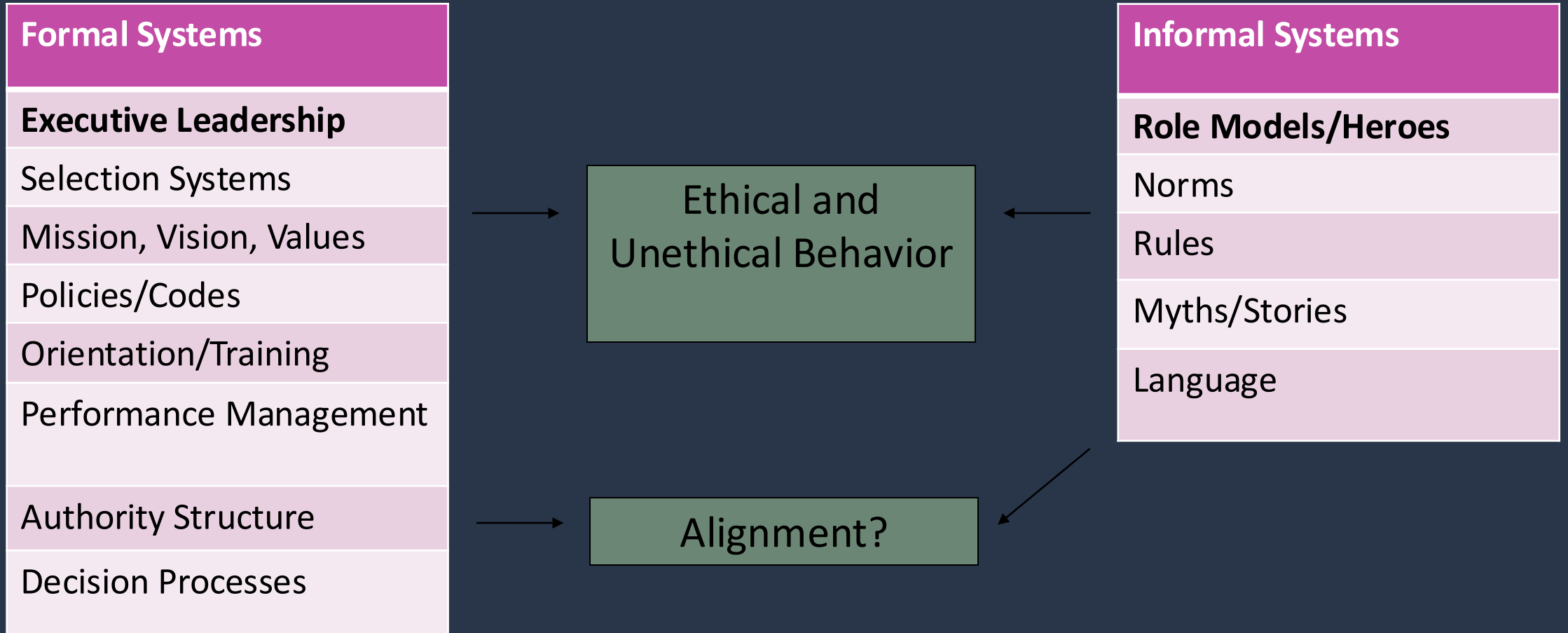


# Culture



An Ethical Culture

# Ethical Culture Systems





93

94

95

96

97

98

99

# Ethics Pursuit

The background features a stylized mountain range with a jagged grey outline. The sky is composed of horizontal bands of color: dark purple at the top, followed by a lighter purple, a brownish-orange, and a blue band. The foreground is a solid dark blue.

**patagonia<sup>®</sup>**



# Financial Performance



The image features two stacks of US dollar bills. The stack on the left is in sharp focus, showing the top bill with a green serial number 'F6 19531854 A' and the name 'John C. ... School'. The stack on the right is blurred, with a visible serial number 'DE 45833462 A'. The text 'Financial Misconduct' is overlaid in a large, bold, black font across the center of the image.

# Financial Misconduct

Recruitment

Retention







A high-resolution image of the Earth as seen from space, showing the curvature of the planet, blue oceans, white clouds, and brownish-green landmasses. The background is a dark, star-filled sky. The word "Caution" is written in a clean, white, sans-serif font across the center of the Earth's disk.

Caution

# Ethics Well





Thank you

[jlesandr@gmail.com](mailto:jlesandr@gmail.com)